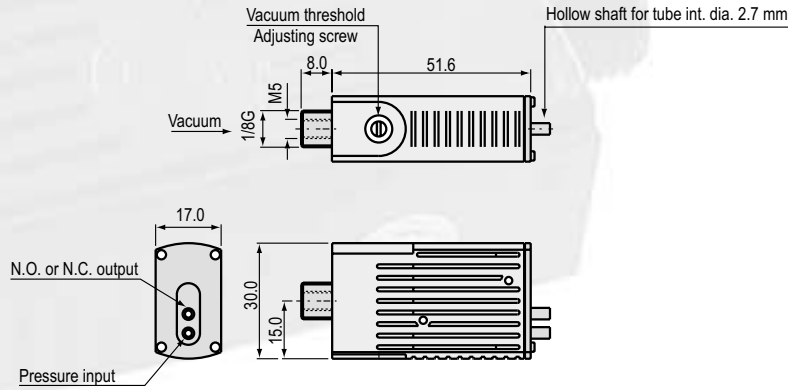


# Pneumatic vacuum switch, series PSE 100 P

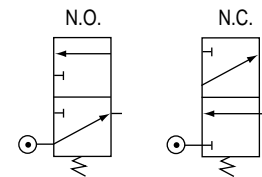


## Applications:

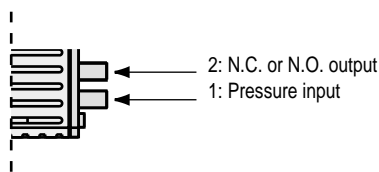
The vacuum switch with **pneumatic** output, in series PSE 100 P, allows the vacuum level in the system to be checked by means of a **patented** system. This vacuum switch is available in two versions: **N.O. version** recommended for the «air saving» function on a venturi and **N.C. version** for the «**sa-fety**» function (part present, etc.) and «**grafcet signal**».

## Specifications:

Models	Two versions: N.O. and N.C.
Compatible fluids	All non-corrosive gases
Operating pressure	2 to 6 bars
Adjusting range	-300 mb to -830 mb
Accuracy	3%
Hysteresis	80 to 100 mb
Repeatability	< 3% of whole range
Maximum work rate	30 cycles per minute
Authorized overpressure	2 bars (destructive at 5 bars)
Mechanical endurance	5 x 10 <sup>6</sup> operations
Materials	Body: Polyacetal - vacuum sensor: nitrile diaphragm
Weight	32 g
Temperature	-10°C to +80°C
Flow rate at 6 bars	70 NI/min

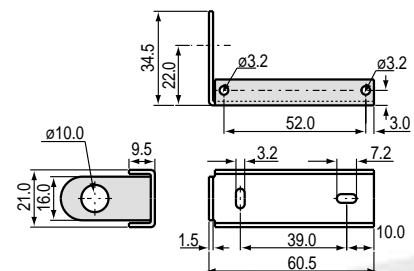


## Pneumatic connection:



## Mounting of vacuum switch:

Clip reference **PSE.F.**



## Special design:

On request, factory preset version  
Optional fitting GVO on GVP range.

**PSE 100 P** ——— **1**

1: Version

NO	Normally open (N.O.)
NC	Normally closed (N.C.)